

CTT Storage Products

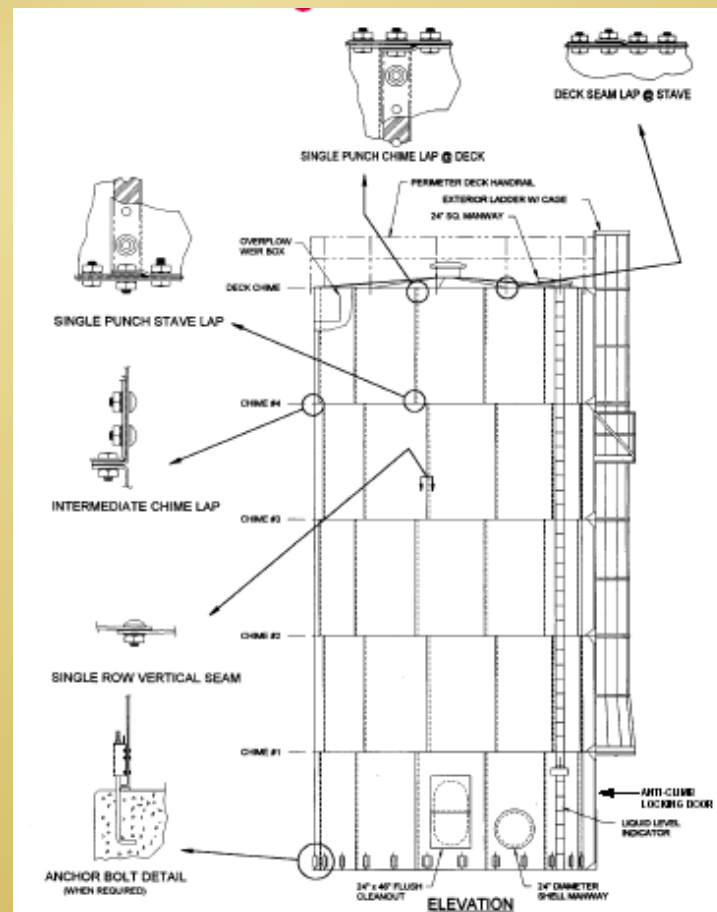
Bolted & Welded Tanks & Silos

- Hopper bottom Skirted Silos
 - Elevated Structures with Tanks
 - Drive-Through Skirted Silos
 - Welded Leg Tanks
 - Flat Bottom Storage Tanks & Silos
 - Liquid Storage Tanks
 - Bolted Column Enclosures
 - Structural Supports & Platforms
-
- Gravity Blending Systems
 - Aluminum Geodesic Domes
 - Erection & Installation
 - Flow Testing

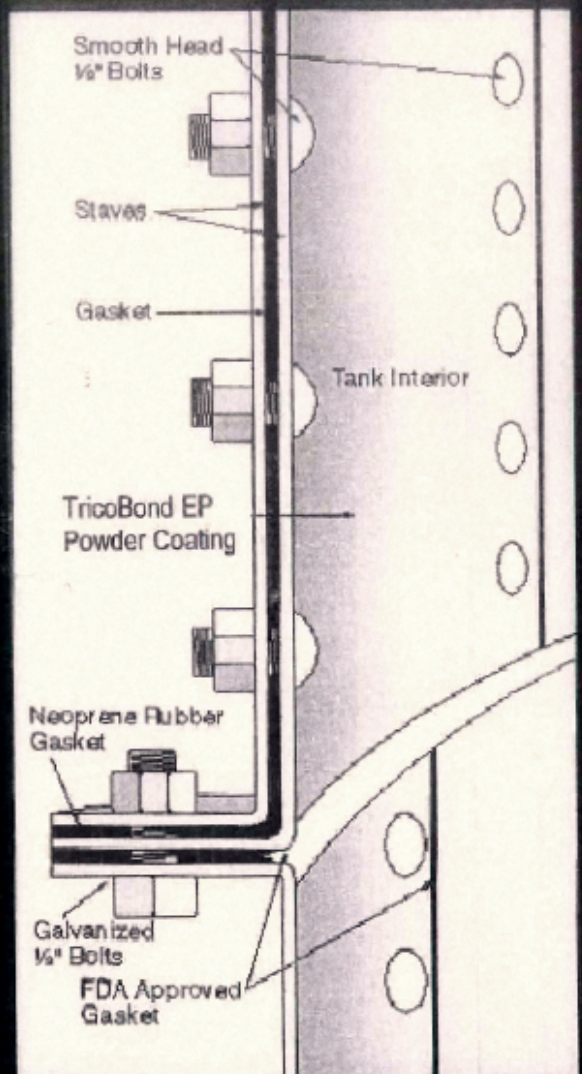
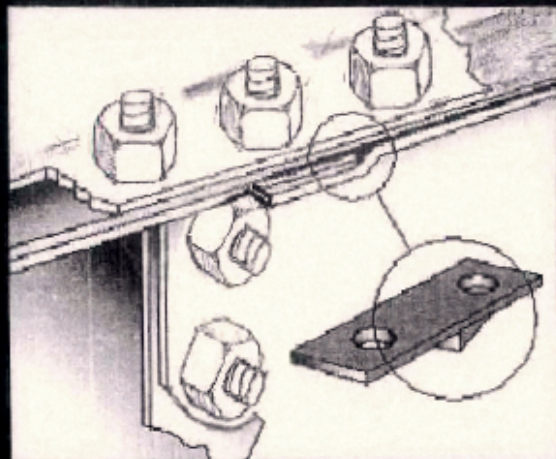
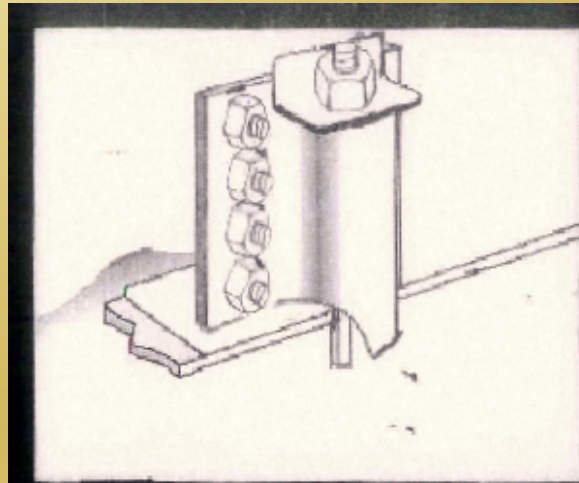


Manufacturing Capabilities

- Alloys: Carbon Steel, Stainless, Aluminum
- Bolted Dry Hopper Silos: 9'-48' diameter, 24'-137' height
- Grain Tanks: Capacity to 1.7 million bushels
- Coatings: Proprietary Trico-Bond EP Coating Systems



CTT Bolted Details



Rail Load-Out



Truck Load-Out



Adjacent Silos With Air Slides



Large Capacities



38', 42' & 47' diameter designs

Hopper bottom designs up to 150,000 cubic feet

Plastics, Chemicals & Minerals



Structure Support



Bolted smoothwall silos supported on structural steel typically utilize a short skirt support for attachment.

A 2' short skirt support is the most cost efficient approach of transferring the silo loads into the structure.

Bolted Tank Shipping

- Specialized shipping racks keep staves separated
- Maximum pick usually less than 3,000 pounds
- Balance of materials palletized

